


FEATURING THE DEBATE, THE REUSE OF BUILDINGS, WITH THE PARTICIPATION OF OLE BOUMAN, JULIAN HARRAP, PEI ZHU. INTERVIEWS WITH MOHSEN MOSTAFAVI & DAVID CHIPPERFIELD AND WITH TARALD LUNDEVALL & RAMON BOSCH, BET CAPDEFERRO. SELECTION INCLUDES WORKS BY DAVID CHIPPERFIELD ARCHITECTS IN COLLABORATION WITH JULIAN HARRAP, BOSCH.CAPDEFERRO, ARCHITECTENBUREAU KOEN VAN VELSEN, ATELIERS JEAN NOUVEL, BERNARD TSCHUMI ARCHITECTS, MDMA, ZAHA HADID ARCHITECTS, ARHITEKTURA KRUŠEC, BIG, BLAF, CARUSO ST JOHN, JABORNEGG&PÁLFFY, JENSEN & SKODVIN, JLCG, MANGADO Y ASOCIADOS, NEUTELINGS RIEDIJK, NIETO SOBEJANO, NL ARCHITECTS, O'DONNELL + TUOMEY, RANDIĆ-TURATO, SAUERBRUCH HUTTON, SOUTO MOURA ARQUITECTOS, UNSTUDIO AND MANY MORE.

2011 EUROPEAN UNION PRIZE FOR CONTEMPORARY ARCHITECTURE

MIES VAN DER ROHE AWARD



mies  barcelona

MIES VAN DER ROHE
AWARD
2011

EUROPEAN UNION PRIZE
FOR CONTEMPORARY
ARCHITECTURE

mies  barcelona



Passiefhuis met huid van textiel



Belgium is one of the most dense, yet endlessly dispersed areas in Europe. It has come to a point where the existing models for spatial development - often based on private ownership of land - are no longer justifiable. The idea behind this project was not so much to criticise this

situation. Rather it was based on the architects' research into the generating capacity of architecture on a spatial, social and ecological level. The objective was to explore an alternative and positive approach and thereby cause a shift in the behaviour that has created this problem. The

Passive House with Textile Skin

ASSE, BELGIUM



1

site is on a leftover lot in a 1960s housing development. By designing the front yard as a semi-public 'playground', and by using the front facade literally as a 'drawing board', this house becomes a more social and hospitable element in the neighbourhood. The unexpected introduction of the semi-public space dislocates the neighbourhood's rigid concepts of privacy and territory. The topography and orientation of the site and the passive house principals led to an efficient skin design that embodies and reinforces aspects such as transparency, flexibility and interaction.



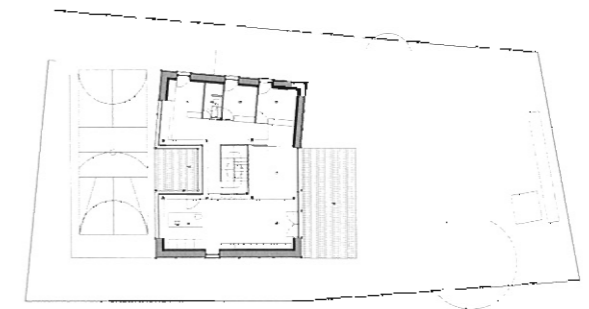
154



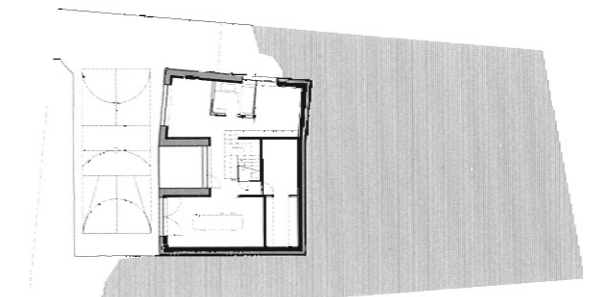
2

Bart Vanden Driessche, Lieven Nijs,
Barbara Oelbrandt

BLAF architecten



3



4

- 1 Site plan
- 2 Sections
- 3 First floor plan
- 4 Ground floor plan



155