

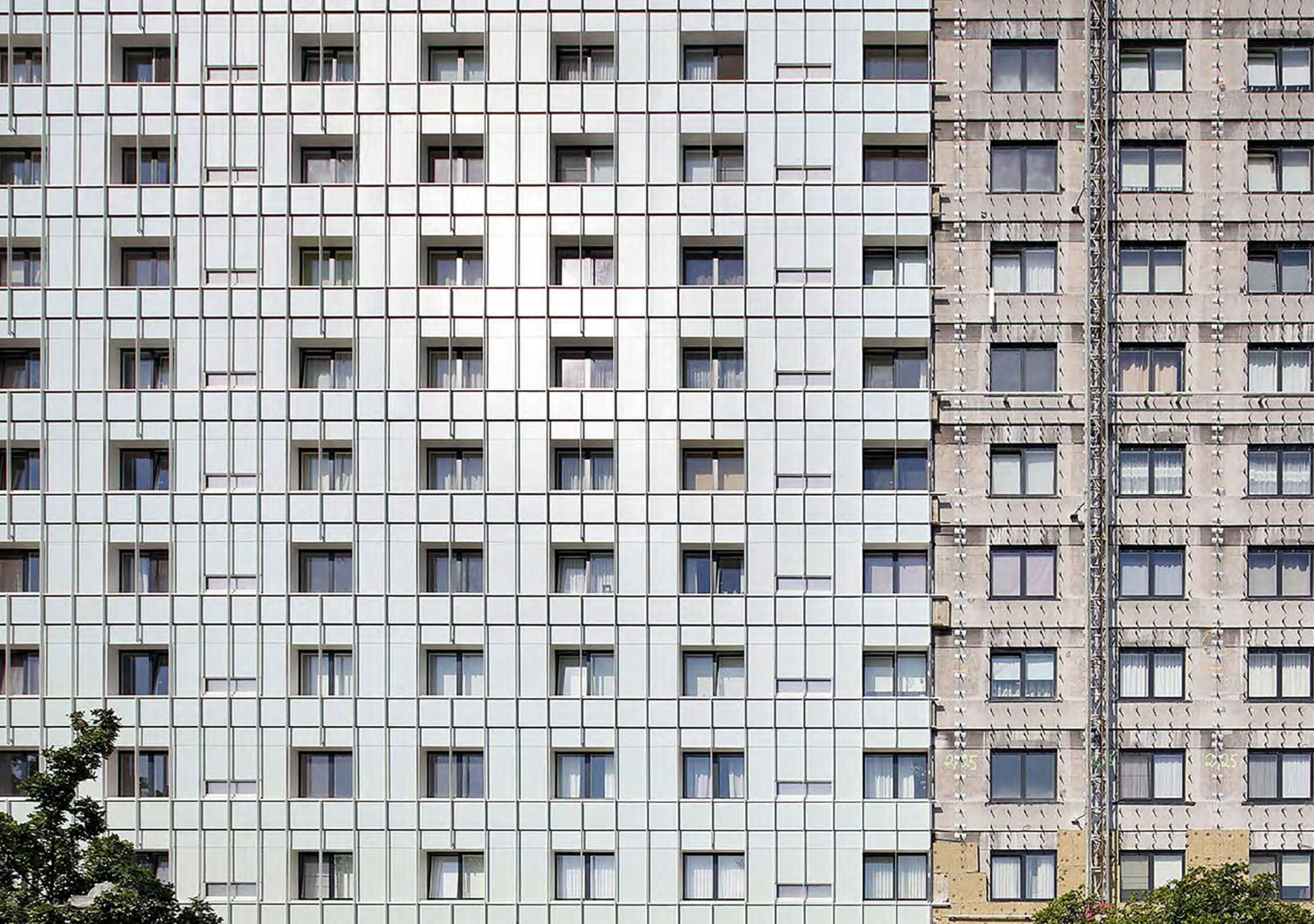
HIGH-RISE APARTMENTS LOKEREN



If you approach the building obliquely, these fins give the facade extra rhythm. Sometimes the building seems more closed, and sometimes it looks very open. Combined, the facade boards and the fins ensure that there is a lot of life, colour and variety in the facade on a very prominent building.

BART VANDEN DRIESSCHE, ARCHITECT,
BLAF ARCHITECTS







A PLAY WITH COLOURS AND SHAPES FOR A TRULY DYNAMIC DESIGN.

The old and grey concrete facade was anything but a nice calling card for residents and visitors alike in the Belgium town of Lokeren. After a heavy renovation project, the characteristically grey concrete was replaced with Euroclass A2 Rockpanel Metals, giving the apartment building a unique appearance. A special metallic gloss coating ensures that the building looks different from every angle.

The architects found everything they were looking for in a facade material from Rockpanel perfectly fitting the customer's wishes. Due to the special metallic gloss coating, the building looks white from a great distance, while the facade turns blue in overcast weather and almost appears green in sunny weather.

This changing colour effect is enhanced by placing white 'fins' over the entire height of the building. These vertically placed aluminium tubular profiles protrude about 10 centimetres from the facade.

PRODUCTS: Rockpanel Custom Metals	
ARCHITECT: BLAF Architects	
PROJECT LOCATION: Lokeren, Belgium	



