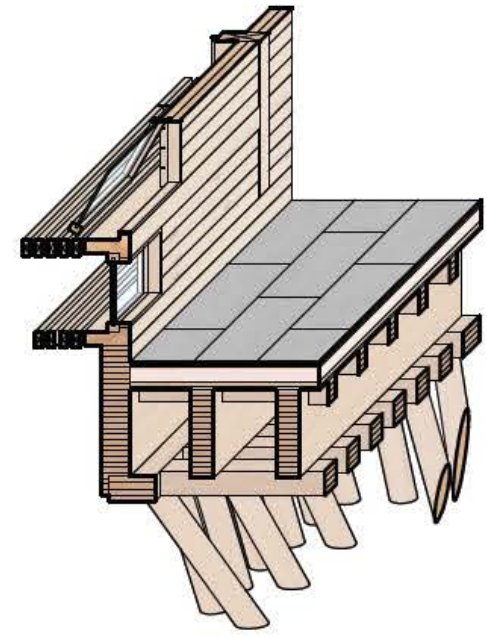
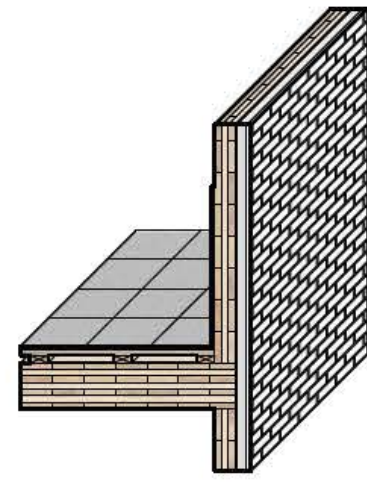


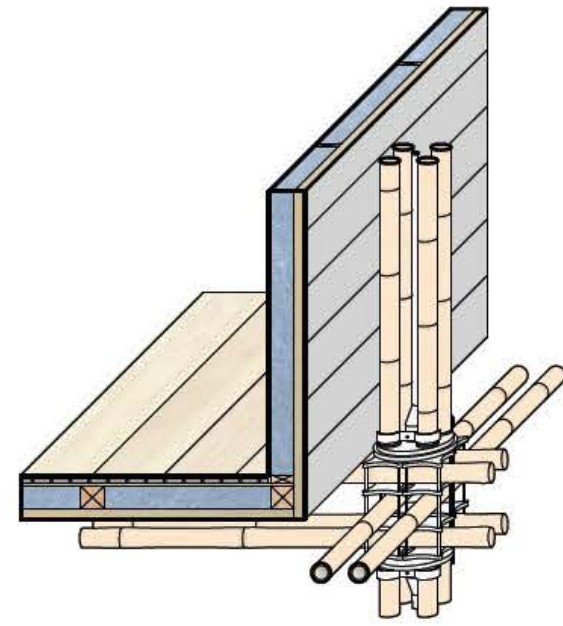
Building on *Manual of Section*, this book articulates how plant-based and low-carbon materials can produce a profound rethinking of section in houses.



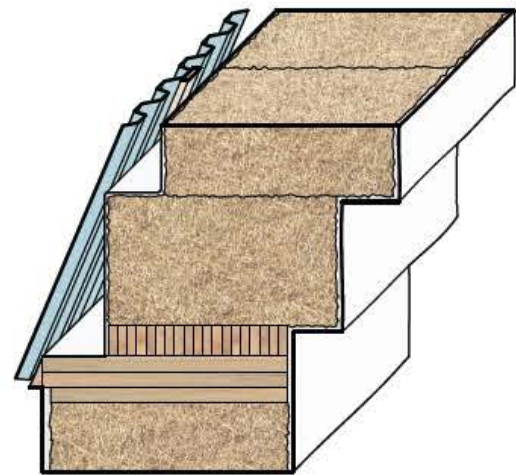
Wood Frame



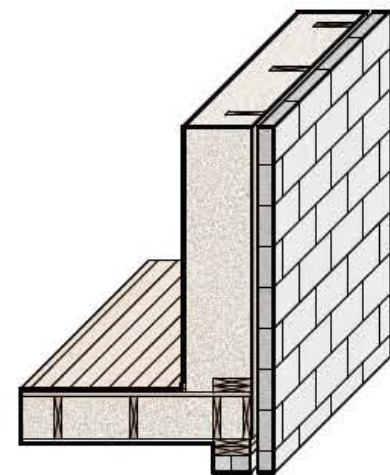
Mass Timber



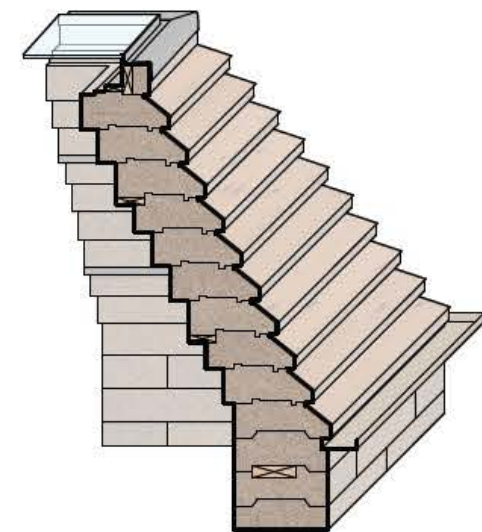
Bamboo



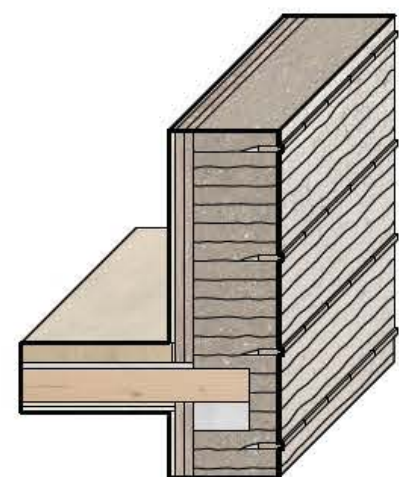
Straw



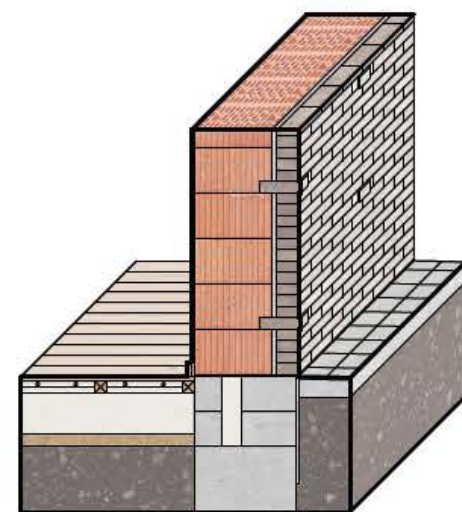
Hemp



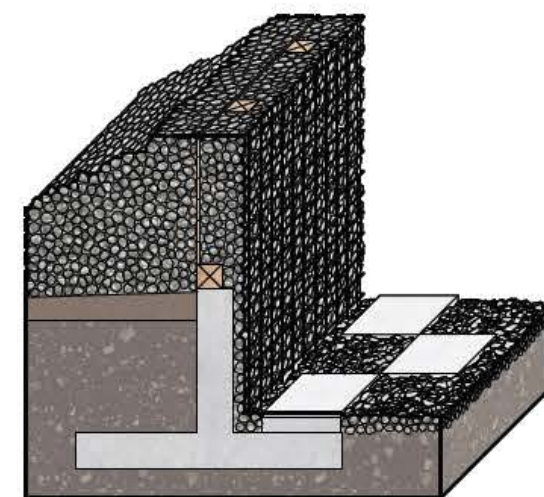
Cork



Earth



Brick



Stone

ISBN 978-1-957183-09-1

USD 39.95

5 3 9 9 5



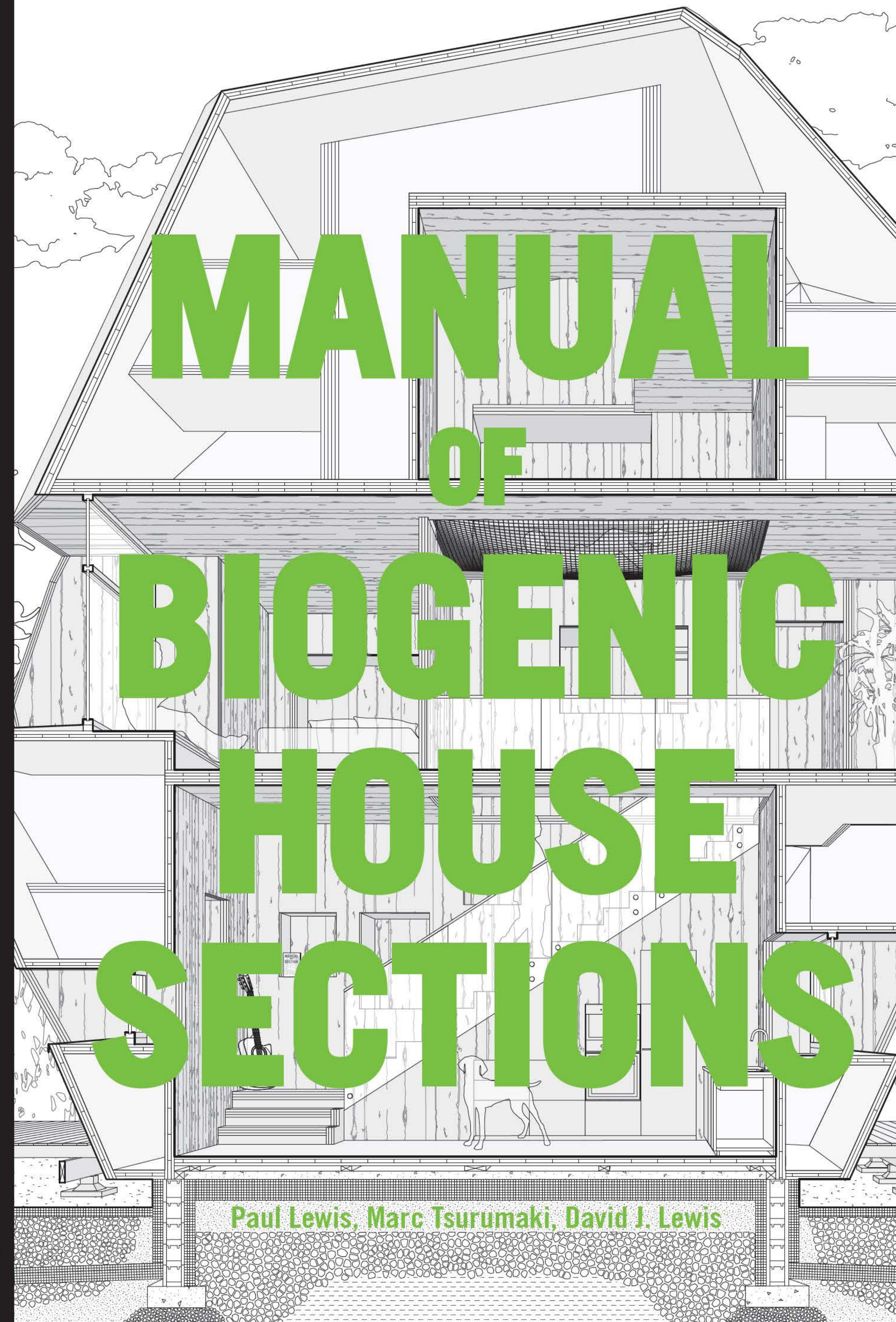
9 781957 183091

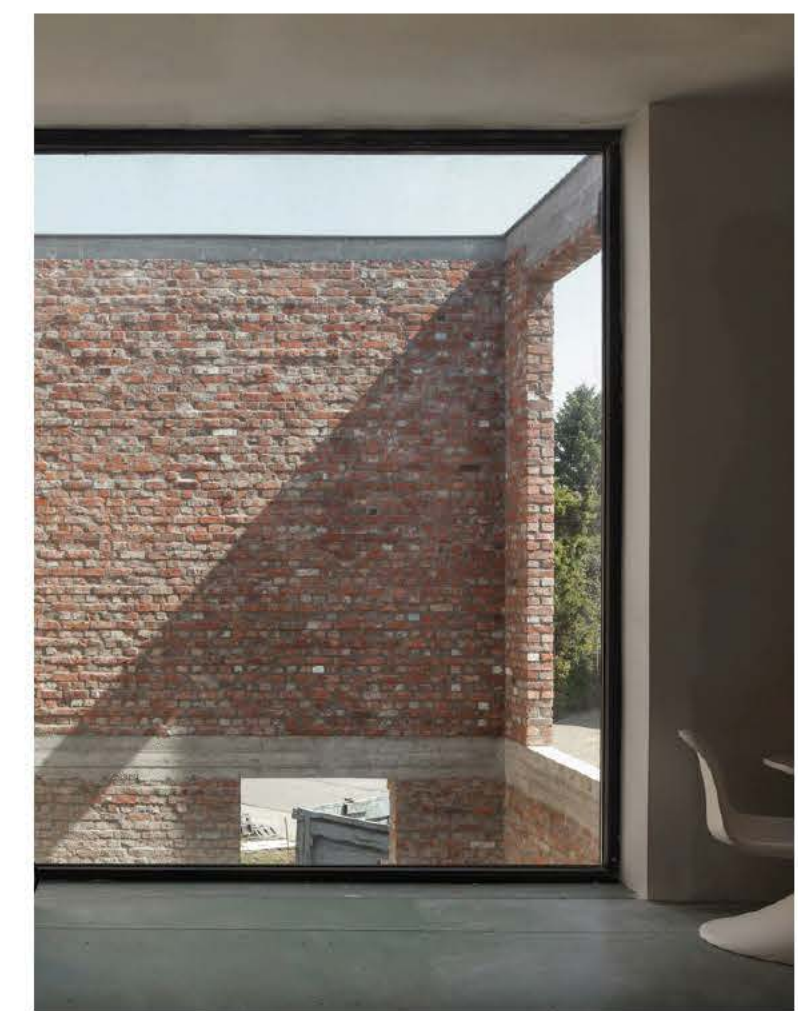
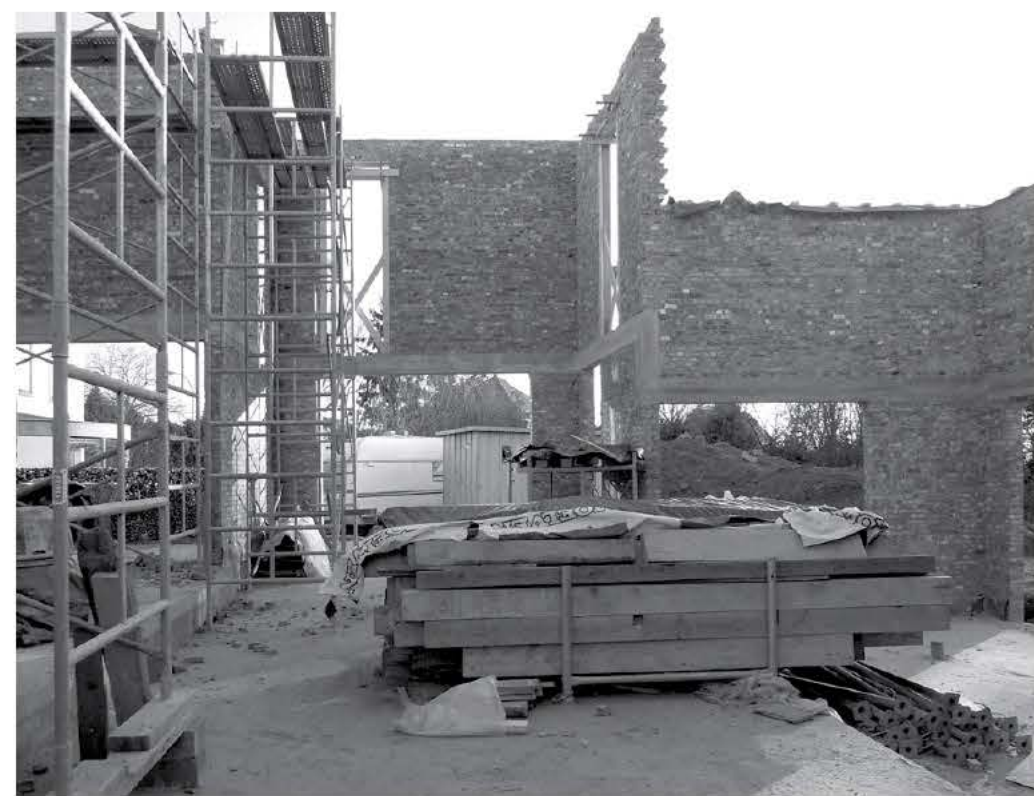
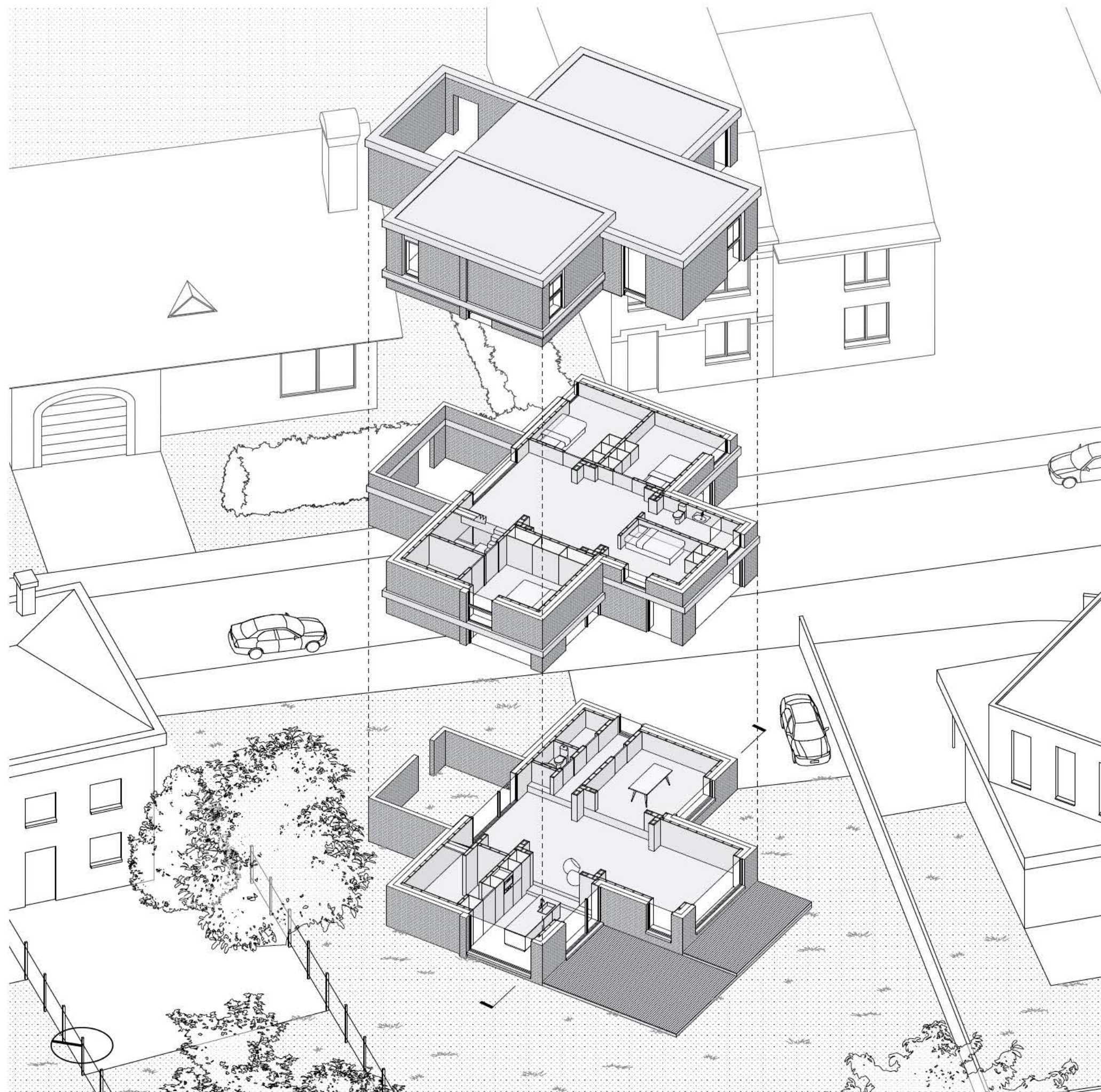
>

Lewis · Tsurumaki · Lewis

MANUAL OF BIOGENIC HOUSE SECTIONS

ORO  
EDITIONS





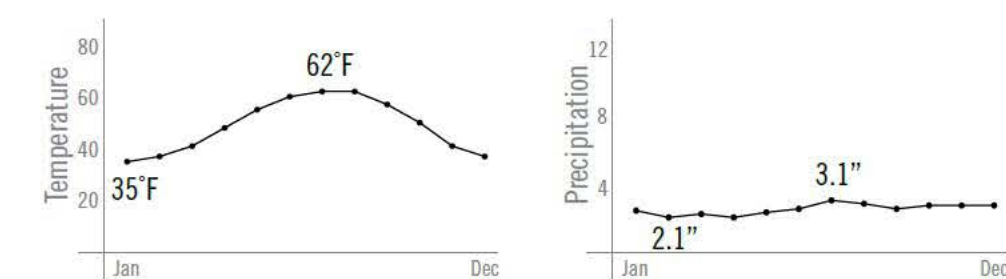
**dnA House** | BLAF Architecten

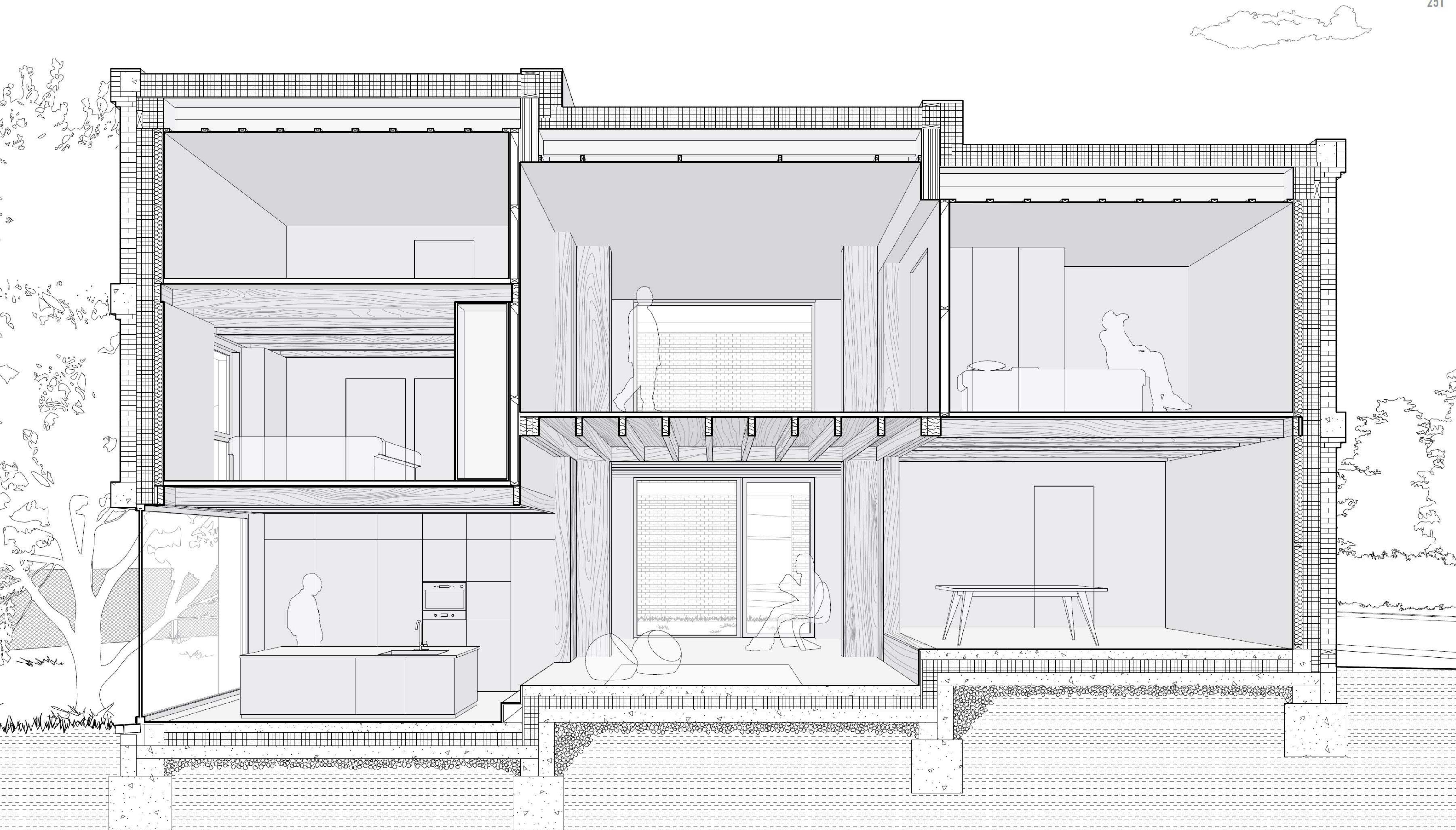
Located along a residential street of similarly scaled buildings in a small town in the periphery of Brussels, this house deploys bricks walls in unusual but subtle ways. Using a combination of reclaimed bricks that match the context and concrete, the walls are self-supporting but do not hold up the interior, nor are they propped up as a veneer. Instead they

contain a wood-framed interior structure separated by an insulated cavity. The independence of these wall systems is made legible at the courtyard, where the two separate, revealing the flat interior of the brick. Inside the house, the wood framing is developed as a shear section, allowing the lower-level living area to cascade with the topography away from the

street, while the upper floor splits into two levels. The cruciform plan is rotated 45 degrees to the street, enhancing the three-dimensional qualities of the house.

**Asse, Belgium** | 2013





## dnA House

The two structural skins allow the masonry walls to outlive its interior, with its independence being more easily adapted for a future life. The interior surface of the brick walls were designed to be smooth to simplify the detailing of the wood lining. Moreover, the design of the house

differentiates the detailing of the masonry enclosure and the wood enclosure to great effect. On the exterior, the concrete frame is playfully supported by, or in other locations covered over by, corbeled bricks. Bricks form flat surfaces appearing as infill walls within the concrete beams,

while also gathering into columns flush with that concrete. Despite appearances the horizontal concrete bands are not the floor, but merely register the floor levels. On the interior, wood columns are clustered into overlapped corners, reinforcing the cruciform plan in the main room and accentuating

the design as a collection of semi-discrete rectilinear boxes. Wood joists are visible throughout the ceiling, but their direction shifts from room to room underscoring each volume's relative autonomy.