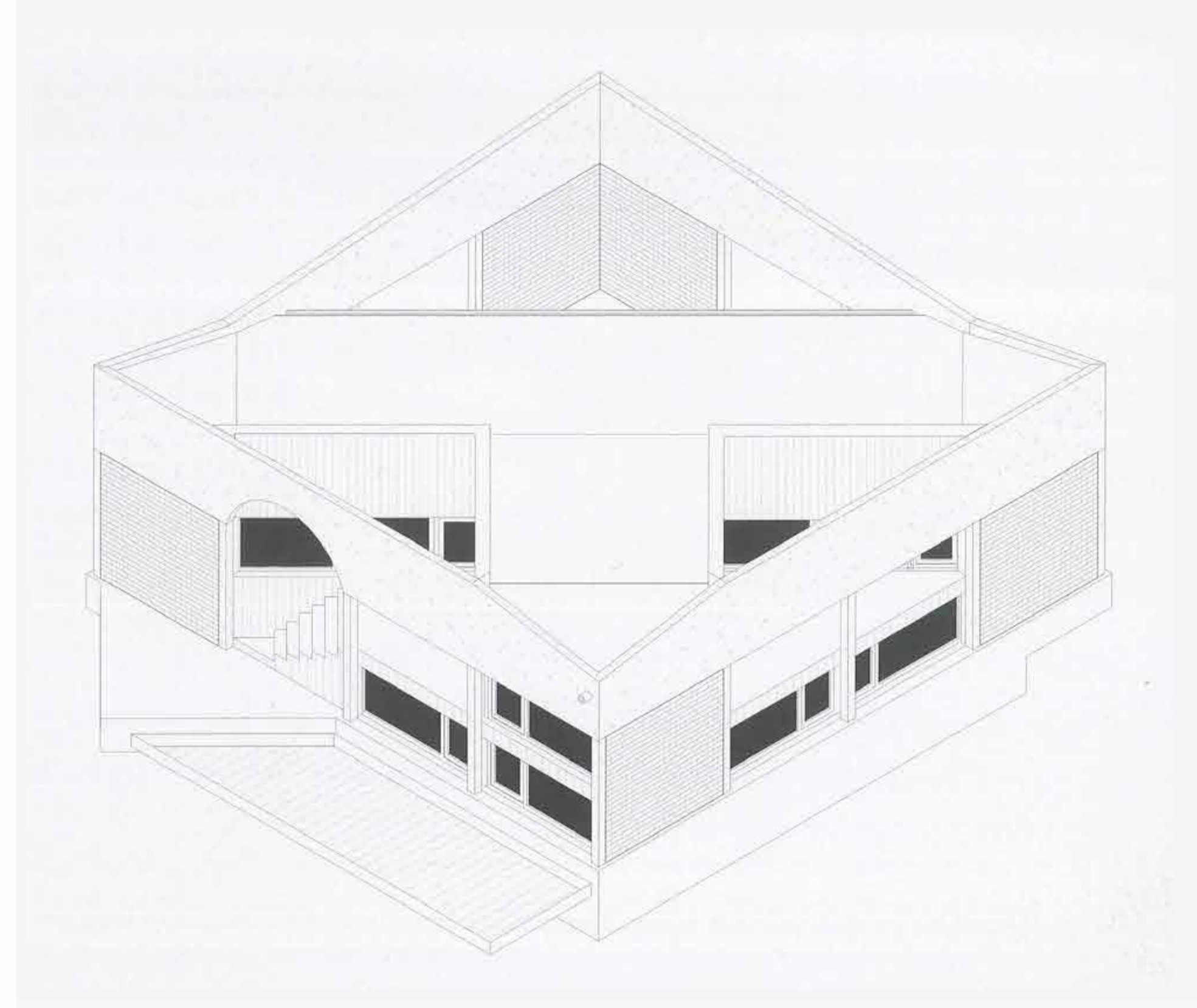




A ROOM THAT IS ALL ABOUT THE VIEW

House hkZ · Blaf architecten · Zoersel, Belgium

In this private house development by Blaf architecten, the primary living spaces—the kitchen, dining room, and living room—are arranged in a large, open-plan, split-level volume. Light floods in from windows on all sides, and the numerous views across the house differ according to where you are standing. The kitchen occupies one end of the lower level and is open to the dining area, which itself leads to an outdoor terrace. The living area is perpendicular to the dining room/kitchen on the half-floor above. Exposed timber beams span the ceiling throughout, reinforcing the continuity as you circulate the space. There is a great sense of transparency and fluidity. The kitchen itself comprises a run of low, chestnut-brown cabinets flanking the external wall, which then turns the corner and culminates in a protruding triangular countertop with an inset stovetop. The space is interrupted by a door to a terrace, then continues into the dining room, where cabinets line the wall. The appliances—oven, fridge, dishwasher—are not visible, but surface-mounted extraction pipes and large, bare-bulb pendant lights give the space a semi-industrial feel.



The drawing of the house reveals its complex structure and shows how the internal and external spaces are intertwined. Different sightlines and perspectives unfold within the home to ensure maximum contact with the environment.

