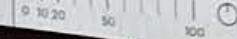
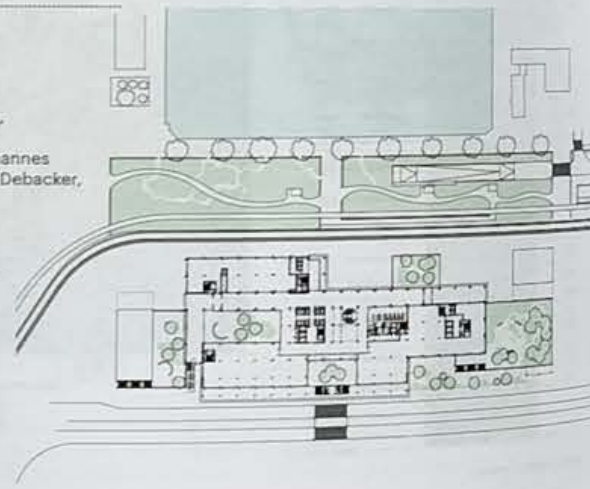
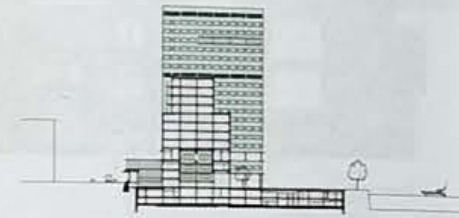
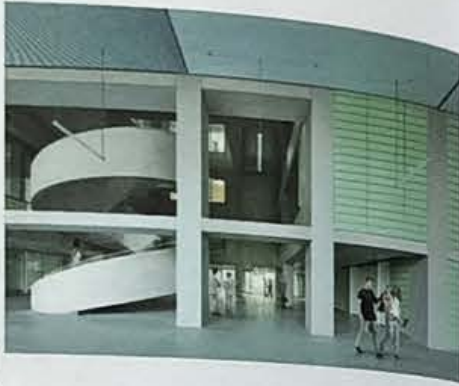




The new hospital in Antwerp is a hinge between docks, park and city. The limited area requires the hospital to be organized vertically. It has a layered structure that is bisected horizontally by interweaving the building with its surroundings. The building brings care visibly into the city and repositions itself as a key building that makes the city. It is striking how the hospital, in its vertical form comprising 19 floors, is repeatedly intersected horizontally by a healthcare-related commercial layer at ground level, a panorama floor on the third level and a large number of patios and terraces (despite its dense location). This allows the environment to effectively permeate every level of the hospital.

Hospital ZNA Cadix

› ANTWERP, BELGIUM
2012/2016-2022
Health - 65,000m²
Robbrecht en Daem architecten,
VK architects+engineers
Paul Robbrecht, Hilde Daem, Johannes Robbrecht, Steven Wallays, Tom Debacker, Kim Debeysse
Ziekenhuisnetwerk Antwerpen (Hospital Network Antwerp) - Kairos, Euro Immo Star (Private)
© Filip Dujardin



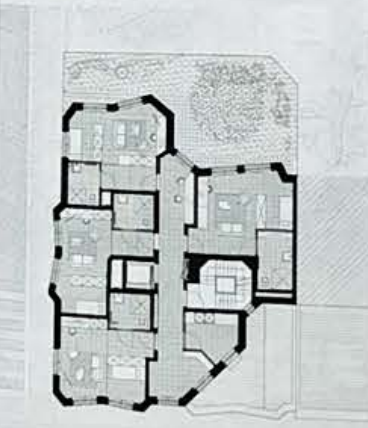
51°13'53"N



Honkhuis is a small scale collective dwelling for assisted living. It is a house for 13 residents with mental disabilities. It is designed as a contemporary corner town house, marking the entrance to a newly developed neighborhood and public park. The program is small-scale and tailored. Each resident gets their own studio. Cooking and eating are done communally. A shared seating area, garden, multi-purpose therapy room and office/conversation room completes the collective program. We developed a simple section, locating collective living rooms on the ground floor and the personal studios on the upper stories. The top floor houses the multi-use spaces.

Honkhuis - Small-Scale Assisted Living

› LEUVEN, BELGIUM
2019/2021-2023
Collective housing - 1,100m²
360 architecten
Jan Mannaerts, Kris Buyse, Greet Houben, Katrijn De Jonghe
HONK vzw (user) / Resiterra (client) (Private)
© Katrijn De Jonghe

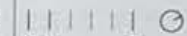
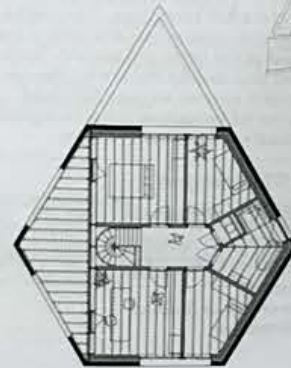


50°52'30"N - 4°41'40"E

Thanks to its compact hexagonal and equilateral footprint, the volume stands alone in the landscape. Meanwhile, the undeveloped land where its placed remains as open as possible and retains its slightly sloping relief. The hexagonal footprint maintains visual connections from the public domain to the landscape beyond. The project features a wall structure comprising of self-supporting facing brick on the outside and a light timber frame on the inside, eliminating the need for insulation and offering an alternative to petroleum-based wall insulation systems.

Jtb House

› LEUVEN, BELGIUM
2019/2020-2022
Single house - 330m²
BLAF architecten
Lieven Nijs, Bart Vanden Driessche
Tine Carmeliet & Jasper Vanpaemel (Private)
© Stijn Bollaert



50°49'32"N - 4°42'33"E